

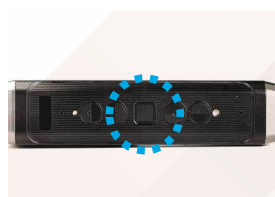
# rontronic industrial



Safety frame mounting accessory (PPE Compatible)



Dual camera, main camera (16MP) and secondary camera (8MP)



Fingerprint security



Laser pointer

## ■ Specification

<b>Core Platform &amp; Functions</b>	Operating System	Android 10
	Chipset	2.0 GHz 8-core Qualcomm® Snapdragon™ 662 with Adreno 610 GPU - OpenGL ES 3.1 & OpenCL 2.0
	Languages Supported	English, Mandarin Chinese
	Memory	32 GB Internal Storage /3 GB RAM
	Included Applications	Document Navigator, Barcode Reader, Camera, Media Player, setting, language selector, System Upgrade
<b>Network connections</b>	Bluetooth	BT 5.0 LE (Low Energy)
	Wi-Fi	802.11 a/b/g/n/ac – 2.4GHz and 5GHz
<b>Tracking</b>	IMU	9-DOF (3-axis accelerometer, magnetometer, and gyroscope), software enhanced stabilization, light sensor
<b>Battery</b>	Capacity	750 mAh Li-Ion, rechargeable, attach to additional battery pack
	Battery Life	3 hours alone, full shift (8 hrs) with extended battery bank
<b>Physical characteristics</b>	Weight	155 g
	Ruggedization	IP66 rating, 1.5 meter drop test Environmental engineering related and laboratory testing
	Dedicated Keys	Power and biometric fingerprint key, control key
	Interface	3.5mm audio, Type-C USB 3.0
	Boom Arm	Six dimensions adjustable for all head sizes, support left or right eye display. Foldable to put in pocket, easy to carry
<b>Display</b>	Parameter	20° field-of-view, 1meter fixed focus, 24-bit color LCD, 0.33 inch diagonal, outdoor visible
	Resolution	WVGA (854x480)
<b>Audio</b>	Microphones	4 digital microphones with active noise cancellation Accurate voice recognition even in 95 dBA of typical industrial noise
	Speaker	Internal 90 dB loudspeaker
<b>Multimedia</b>	Camera	Main camera: 16 MP 4-axis optical image stabilization, PDAF with LED Flashlight; Laser spotlight Front camera: 800 MP, real 1st field view, see through view
	Video	Support 1080p @30fps Codecs: VP8, VP9 and hardware encoding support for H.264, H.265 HEVC
	Included	USB3.0 Type-C charging cable
<b>Accessories</b>	Optional	Industrial power pack, charger, safety helmet buckle, crash helmet, general workband, professional semi ladle, modular workband, USB to typec 3.0 adapter, USB to typec 3.0 cable, 6mm diameter headset

All specifications are subject to change without notice. Please check with your supplier for exact offers.